

STAIRS MODULAR



WHY: STAIRS MODULAR

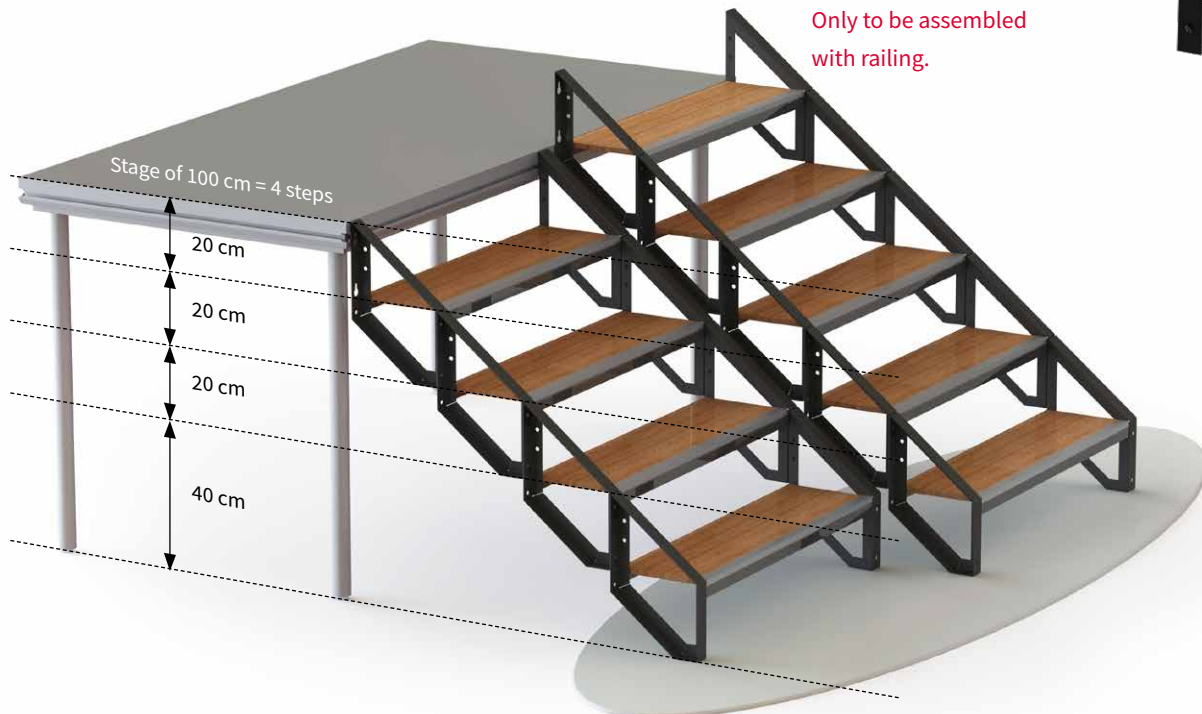
351018

- A single step unit, one-size fits all
- Bolted together to create stair height up to 140 cm
- Ideal for transport: optimised packaging volume due to flat-pack-design
- Anti-slip Steps
- Loading 500 kg/m²
- Protected front edge of steps
- Integrated handrail connection

Every element of modular stairs has a total height of 40cm, when mounted properly the height of the stairs will increase with steps of 20cm. **The formula to calculate the amount of elements needed is:**
height of stage in cm / 20 = ... - 1



Only to be assembled with railing.



The New Original

www.sixty82.nl

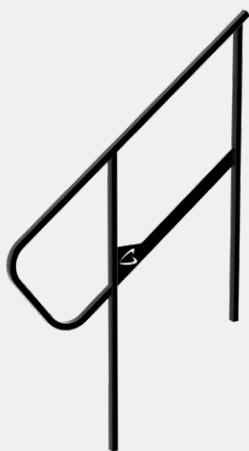
STAIRS MODULAR



ACCESSORIES

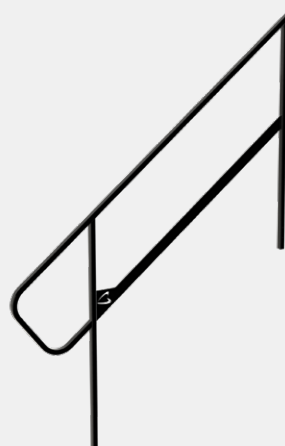
HANDRAIL 3-4 STEPS

351021



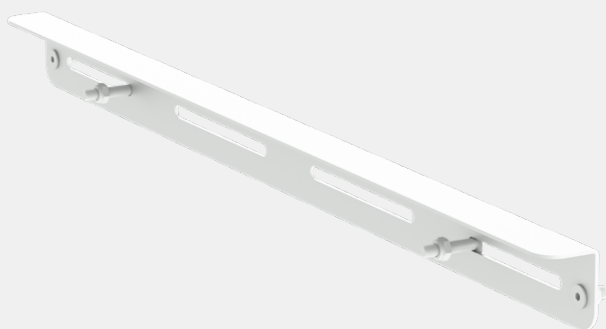
HANDRAIL 5-6 STEPS

351022



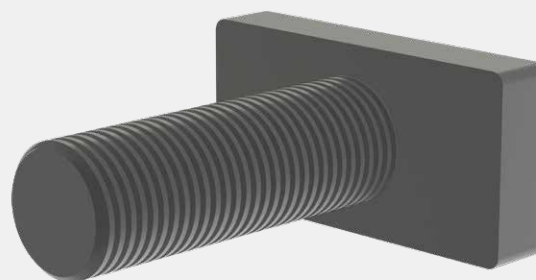
LIVEDECK CONNECTOR

351023



T-BOLT M10

816026



STAGE82 CONNECTOR

The New Original

www.sixty82.nl